

~~ABOVE~~  
BEYOND YOUR SHEARS



~~ABOVE~~

[aboveshears.com](http://aboveshears.com)





[aboveshears.com](http://aboveshears.com)

*We are Above because we strive to be the best.*

— Chao Wei, Founder & President

**ABOVE**

**ABOVE** shears aims to provide hair professionals with shears that are unparalleled in precision and craftsmanship. Our mission is to exceed expectations and set the industry standard for excellence.

Each of our shears are handcrafted by highly skilled masters using only the finest proprietary cobalt steel and customized ball-bearing tension systems. This results in durability, reliability, and exceptional quality like no other.

With decades of experience in designing/manufacturing high-end shears, Above's team of experts continue to innovate and refine our products. We collaborate with hairdressers, stylists, barbers, and groomers in the community to ensure that our shears meet their specific needs.

We invite you to experience the difference that ABOVE shears can make in your work. Our commitment to superior quality, precision, and innovation ensures superior results every time you use our products. Trust ABOVE for the very best shears in the beauty industry and **cut above the rest.**





DESIGNED BY ABOVE INTERNATIONAL INC. IN CALIFORNIA





Ergo

Nova

Xfit

Flipper

Finest

Shear Series

DESIGNED BY ABOVE INTERNATIONAL INC. IN CALIFORNIA

## ERGO SERIES

Introducing the Ergo Series by Above Shears, the absolute pinnacle of cutting technology designed with ergonomics in mind. Crafted with premium Japanese steel, the Ergo Series is a true testament to precision and functionality.

The Ergo Series features an innovative offset handle design, which reduces strain and fatigue on the wrist, enabling stylists prolonged use without discomfort.

Above Ergo Series ergonomic design also creates a natural and comfortable grip, providing superior control and precision.



AG16 PROPRIETARY STEEL | BALL BEARING TENSION | OFFSET HANDLES | HARDNESS (HRD) 61 (+/-)





The Ergo Series blade design ensures a smooth and effortless cutting experience, while also reducing hand and wrist fatigue. The blades are hand-finished to perfection, creating an unparalleled sharpness that makes cutting effortless.

The Ergo Series also features a durable and lightweight construction with a sleek and modern design that exude professionalism.

The Ergo Series is the perfect choice for hair stylists seeking the ultimate cutting experience.

DESIGNED BY ABOVE INTERNATIONAL INC. IN CALIFORNIA

# Ergo Signature Series



AG16 COBALT STEEL  
BALL BEARING TENSION  
ERGO HANDLE  
HARDNESS (HRD) 61 (+/-)  
SIGNATURE WET&DRY BLADE



## ERGO SIGNATURE

MODEL: C10-550/600/650/700

SIZES: 5.50 / 6.00 / 6.50 / 7.00

CATEGORY: BLADE

WET & DRY CUT

DESIGNED BY ABOVE INTERNATIONAL INC. IN CALIFORNIA



AG16 COBALT STEEL  
BALL BEARING TENSION  
ERGO SWIVEL HANDLE  
HARDNESS (HRD) 61 (+/-)  
SIGNATURE WET&DRY BLADE



## ERGO S

MODEL: C10S-600/650/700

SIZES: 6.00 / 6.50 / 7.00

CATEGORY: SWIVEL

WET & DRY CUT

## Ergo Rose Gold Series



AG16 COBALT STEEL  
BALL BEARING TENSION  
ERGO HANDLE  
HARDNESS (HRD) 61 (+/-)  
SIGNATURE WET&DRY BLADE



### ERGO ROSEGOLD

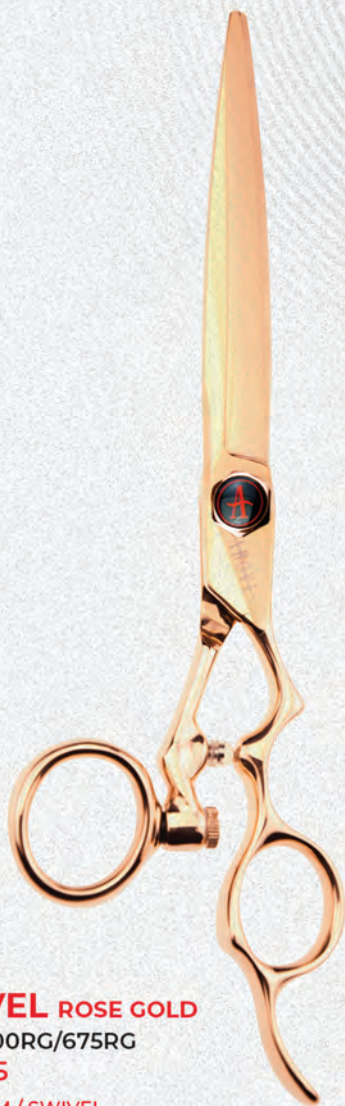
MODEL: C10-550RG/600RG/675RG

SIZES: 5.5/6.0/6.75

CATEGORY: TITANIUM / BLADE

WET & DRY CUT

DESIGNED BY ABOVE INTERNATIONAL INC. IN CALIFORNIA



AG16 COBALT STEEL  
BALL BEARING TENSION  
ERGO SWIVEL HANDLE  
HARDNESS (HRD) 61 (+/-)  
SIGNATURE WET&DRY BLADE



**ERGO SWIVEL** ROSE GOLD

MODEL: C10S-600RG/675RG

SIZES: 6.00/6.75

CATEGORY: TITANIUM / SWIVEL

WET & DRY CUT

## Ergo Black Series



AG16 COBALT STEEL  
BALL BEARING TENSION  
ERGO HANDLE  
HARDNESS (HRD) 61 (+/-)  
SIGNATURE WET&DRY BLADE



### ERGO BLACK

MODEL: C10-550BK/600BK/675BK

SIZES: 5.5/6.0/6.75

CATEGORY: TITANIUM / BLADE

WET & DRY CUT

DESIGNED BY ABOVE INTERNATIONAL INC. IN CALIFORNIA



AG16 COBALT STEEL  
BALL BEARING TENSION  
ERGO SWIVEL HANDLE  
HARDNESS (HRC) 61 (+/-)  
SIGNATURE WET&DRY BLADE



## ERGO S SWIVEL BLACK

MODEL: C10S-600BK/675BK

SIZES: 6.0/6.75

CATEGORY: TITANIUM / SWIVEL

WET & DRY CUT

Ergo X Series





DESIGNED BY ABOVE INTERNATIONAL INC. IN CALIFORNIA



AG16 COBALT STEEL  
BALL BEARING TENSION  
ERGO SWIVEL HANDLE  
HARDNESS (HRD) 61 (+/-)  
X WET BLADE



## ERGO XS

MODEL: C10S-550X

SIZES: 5.50

CATEGORY: SWIVEL

WET & DRY CUT

## Ergo D Series



AG16 COBALT STEEL  
BALL BEARING TENSION  
ERGO HANDLE  
HARDNESS (HRD) 61 (+/-)  
WIDE DUAL BLADE



### ERGO D

MODEL: C10-575D/625D/675D

SIZES: 5.75 / 6.25 / 6.75

CATEGORY: BLADE

DRY & SLIDE CUT

DESIGNED BY ABOVE INTERNATIONAL INC. IN CALIFORNIA



AG16 COBALT STEEL  
BALL BEARING TENSION  
ERGO SWIVEL HANDLES  
HARDNESS (HRD) 61 (+/-)  
WIDE DUAL BLADE



## ERGO DS

MODEL: C10S-575D/625D/675D

SIZES: 5.75 / 6.25 / 6.75

CATEGORY: SWIVEL

DRY & SLIDE CUT

## Ergo Texture Series



AG16 COBALT STEEL  
BALL BEARING TENSION  
ERGO HANDLE  
HARDNESS (HRD) 61 (+/-)  
TEXTURIZING TOOTH



### ERGO 40T

MODEL: C10-6040

SIZE: 6.0 TEETH: 40

CATEGORY: TEXTURIZER

WEIGHT REMOVAL: 30-35%

WET & DRY CUT

[ABOVESHEARS.COM](http://ABOVESHEARS.COM)

DESIGNED BY ABOVE INTERNATIONAL INC. IN CALIFORNIA



AG16 COBALT STEEL  
BALL BEARING TENSION  
ERGO HANDLE  
HARDNESS (HRC) 61 (+/-)  
TEXTURIZING TOOTH



## ERGO 30T

MODEL: C10-6030

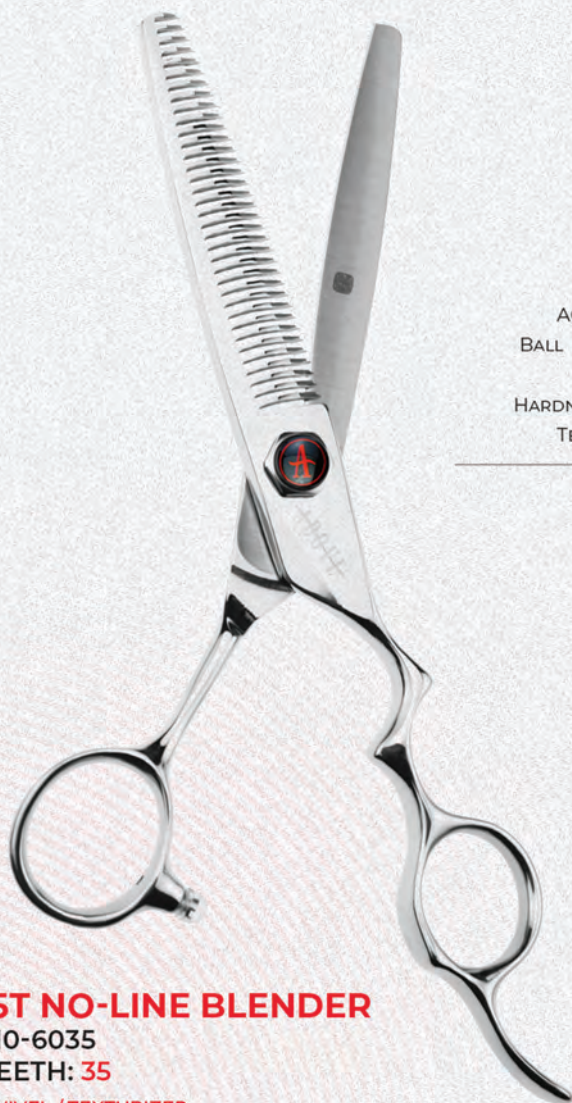
SIZE: 6.0 TEETH: 30

CATEGORY: TEXTURIZER

WEIGHT REMOVAL: 20-25%

WET & DRY CUT

## Ergo Texture Series



AG16 COBALT STEEL  
BALL BEARING TENSION  
ERGO HANDLE  
HARDNESS (HRC) 61 (+/-)  
TEXTURIZING TOOTH



### ERGO 35T NO-LINE BLENDER

MODEL: C10-6035

SIZE: 6.0 TEETH: 35

CATEGORY: SWIVEL / TEXTURIZER

WEIGHT REMOVAL: 10-15%

WET & DRY CUT

[ABOVESHEARS.COM](http://ABOVESHEARS.COM)

DESIGNED BY ABOVE INTERNATIONAL INC. IN CALIFORNIA



AG16 COBALT STEEL  
BALL BEARING TENSION  
ERGO SWIVEL HANDLE  
HARDNESS (HRC) 61 (+/-)  
MICRO SERRATED EDGE



## ERGO S 27TT NO-LINE BLENDER

MODEL: C10S-6027TT

SIZE: 6.0 TEETH: 27

CATEGORY: SWIVEL / TEXTURIZER

WEIGHT REMOVAL: 10-15%

WET & DRY CUT



Ergo Texture Series - Rose Gold

[ABOVESHEARS.COM](https://www.aboveshears.com)



DESIGNED BY ABOVE INTERNATIONAL INC. IN CALIFORNIA



AG16 COBALT STEEL  
BALL BEARING TENSION  
ERGO HANDLE  
HARDNESS (HRC) 61 (+/-)  
TEXTURIZING TOOTH



## ERGO 35T ROSE GOLD

NO-LINE BLENDER

MODEL: C10-6035RC

SIZE: 6.0 TEETH: 35

CATEGORY: TEXTURIZER

WEIGHT REMOVAL: 10-15%

WET & DRY CUT

## Ergo Texture Series



AG16 COBALT STEEL  
BALL BEARING TENSION  
ERGO HANDLE  
HARDNESS (HRD) 61 (+/-)  
TEXTURIZING TOOTH



### **ERGO 35T BLACK NO-LINE BLENDER**

MODEL: C10-6035BK

SIZE: **6.0** TEETH: **35**

CATEGORY: **TITANIUM / TEXTURIZER**

WEIGHT REMOVAL: **10-15%**

**WET & DRY CUT**

[ABOVESHEARS.COM](http://ABOVESHEARS.COM)

The background of the page is an abstract, high-contrast composition of flowing, organic shapes in deep red and black. The shapes appear to be layered and overlapping, creating a sense of depth and movement. The lighting is dramatic, with bright highlights on the edges of the shapes, giving them a metallic or glossy appearance. The overall effect is one of dynamic energy and sophisticated design.

DESIGNED BY ABOVE INTERNATIONAL INC. IN CALIFORNIA

# Ergo Left

DESIGNED BY ABOVE INTERNATIONAL INC. IN CALIFORNIA

AG16 COBALT STEEL  
BALL BEARING TENSION  
ERGO LEFT HANDLE  
HARDNESS (HRD) 61 (+/-)  
X WET BLADE

---



**ERGO X LEFT**  
MODEL: C10-550XL  
SIZES: 5.5

CATEGORY: **BLADE / LEFT**  
**WET & DRY CUT**



AG16 COBALT STEEL  
BALL BEARING TENSION  
ERGO LEFT HANDLE  
HARDNESS (HRD) 61 (+/-)  
SIGNATURE WET&DRY BLADE

---



## **ERGO LEFT**

**MODEL: C10-600L/650L/700L**

**SIZES: 6.0 / 6.5 / 7.0**

**CATEGORY: BLADE / LEFT**

**WET & DRY CUT**



## Ergo Left

DESIGNED BY ABOVE INTERNATIONAL INC. IN CALIFORNIA



AG16 COBALT STEEL  
BALL BEARING TENSION  
LEFT HANDED SHEAR  
HARDNESS (HRD) 61 (+/-)  
SIGNATURE WET&DRY BLADE

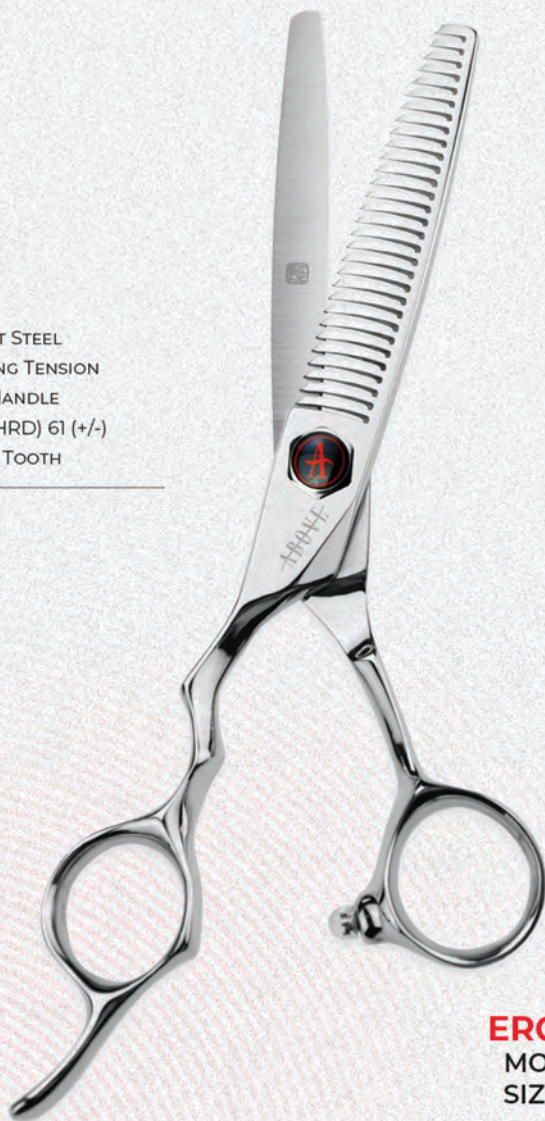
---



**ERGO S LEFT**  
MODEL: C10S-550XL/600L/700L  
SIZES: 5.50/6.00/7.00  
CATEGORY: SWIVEL / LEFT  
WET & DRY CUT

## Ergo Texture Left

AG16 COBALT STEEL  
BALL BEARING TENSION  
ERGO LEFT HANDLE  
HARDNESS (HRD) 61 (+/-)  
TEXTURIZING TOOTH



### ERGO LEFT 30T

MODEL: C10-6030L

SIZE: 6.0 TEETH: 30

CATEGORY: TEXTURIZER / LEFT

WEIGHT REMOVAL: 20-25%

WET & DRY CUT



DESIGNED BY ABOVE INTERNATIONAL INC. IN CALIFORNIA



AG16 COBALT STEEL  
BALL BEARING TENSION  
ERGO LEFT HANDLE  
HARDNESS (HRD) 61 (+/-)  
MICRO SERRATED EDGE



## **ERGO S LEFT 27TT NO-LINE BLENDER**

**MODEL:** C10S-6027TT L

**SIZE:** 6.0 **TEETH:** 27

**CATEGORY:** TEXTURIZER / LEFT

**WEIGHT REMOVAL:** 10-15%

**WET & DRY CUT**

# Ergo D Left

DESIGNED BY ABOVE INTERNATIONAL INC. IN CALIFORNIA

AG16 COBALT STEEL  
BALL BEARING TENSION  
ERGO LEFT HANDLE  
HARDNESS (HRD) 61 (+/-)  
WIDE DUAL BLADE

---



**ERGO D LEFT**  
MODEL: C10-625DL  
SIZES: 6.25

CATEGORY: **BLADE / LEFT**  
**DRY & SLIDE CUT**







Ergo  
Nova

Xfit  
Flipper  
Finest

Shear Series

DESIGNED BY ABOVE INTERNATIONAL INC. IN CALIFORNIA

## NOVA SERIES

A revolutionary leap in cutting-edge technology meticulously crafted for hairstylists who demand precision and versatility. Created from the finest AG 16 Cobalt Steel, the NOVA Series boasts a remarkable 10-year longevity, ensuring durability that stands the test of time. Its unique Cryogenic Treatment guarantees an impressive 800 cutting hours before sharpening, making it the go-to choice for professionals seeking reliability and longevity.

Designed for the modern stylist, the NOVA Series features a Comfort Design that facilitates seamless wet and dry cutting techniques. The low-profile dial and increased stabilization from the lockable ball bearing tension provide optimal control, allowing stylists to achieve flawless results with ease.



AG16 PROPRIETARY STEEL | LOCKABLE BALL BEARING TENSION | BOOSTED BALANCE FINGER TANG



The NOVA Series introduces a Pin-Pointed Silencer for a quieter cutting experience, ensuring a tranquil salon environment. The boosted balance finger tang and easier finger positioning enhance maneuverability, enabling stylists to achieve intricate styles effortlessly.

With its sleek and modern aesthetics, the NOVA Series exudes professionalism and sophistication. Elevate your craft with the NOVA Series by Above Shears, where innovation meets longevity, and every cut is a testament to excellence.

DESIGNED BY ABOVE INTERNATIONAL INC. IN CALIFORNIA

# Nova Series

DESIGNED BY ABOVE INTERNATIONAL INC. IN CALIFORNIA



AG16 COBALT STEEL  
LOCKABLE BALL BEARING TENSION  
BOOSTED BALANCE FINGER TANG  
HARDNESS (HRD) 61 (+/-)  
LOW PROFILE DIAL



## NOVA

MODEL: C4-550/600/685

SIZES: 5.50 / 6.00 / 6.85

CATEGORY: BLADE

WET & DRY MULTIPLE TECHNIQUES





AG16 COBALT STEEL  
LOCKABLE BALL BEARING TENSION  
BOOSTED BALANCE FINGER TANG  
HARDNESS (HRD) 61 (+/-)  
LOW PROFILE DIAL



## **NOVA S**

**MODEL: C4S-600/685**

**SIZES: 6.00 / 6.85**

**CATEGORY: SWIVEL**

**WET & DRY MULTIPLE TECHNIQUES**

# Nova Series

DESIGNED BY ABOVE INTERNATIONAL INC. IN CALIFORNIA



AG16 COBALT STEEL  
LOCKABLE BALL BEARING TENSION  
BOOSTED BALANCE FINGER TANG  
HARDNESS (HRD) 61 (+/-)  
WIDE D BLADE



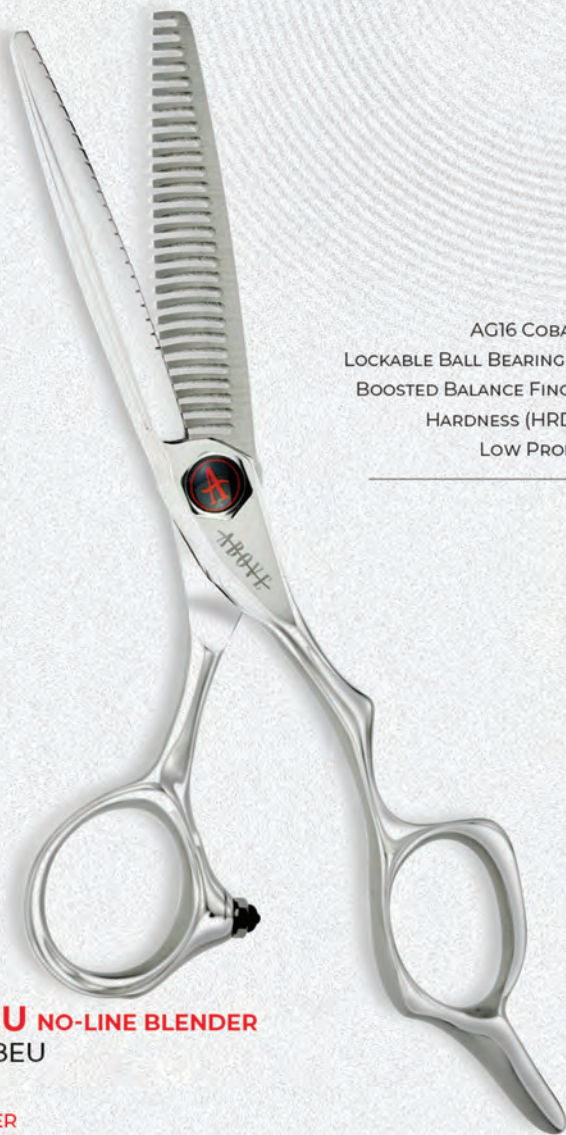
## NOVA D

MODEL: C4-625D/675D

SIZES: 6.25 / 6.75

CATEGORY: BLADE

WET & DRY MULTIPLE TECHNIQUES



AG16 COBALT STEEL  
LOCKABLE BALL BEARING TENSION  
BOOSTED BALANCE FINGER TANG  
HARDNESS (HRD) 61 (+/-)  
LOW PROFILE DIAL



## **NOVA 28 T EU NO-LINE BLENDER**

MODEL: C4-6028EU

SIZES: 6.00

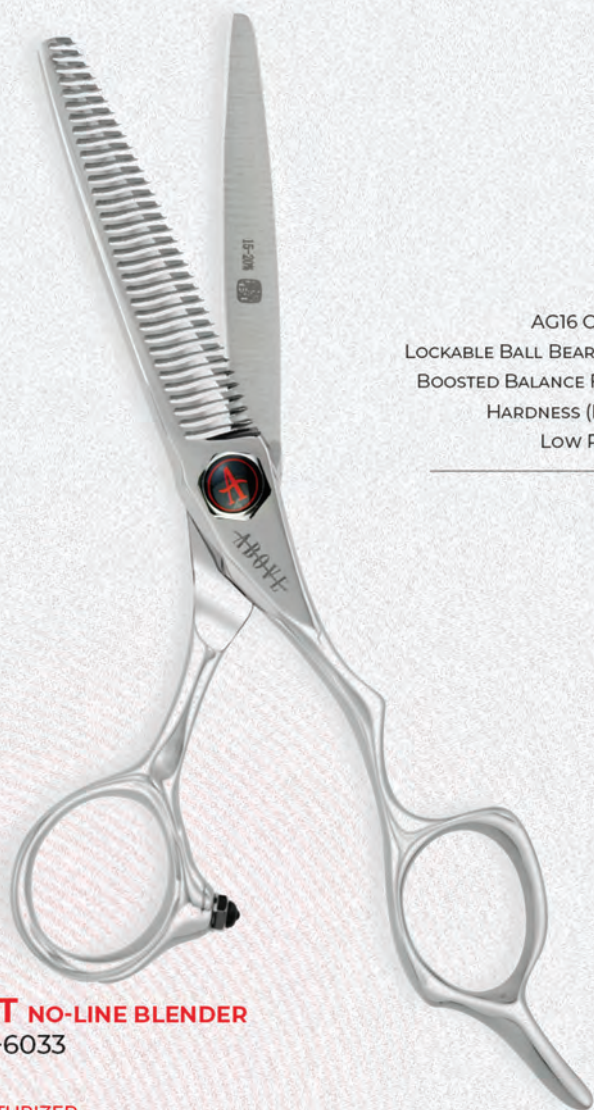
CATEGORY: TEXTURIZER

WEIGHT REMOVAL: 10-15%

WET & DRY MULTIPLE TECHNIQUES

# Nova Series

DESIGNED BY ABOVE INTERNATIONAL INC. IN CALIFORNIA



AG16 COBALT STEEL  
LOCKABLE BALL BEARING TENSION  
BOOSTED BALANCE FINGER TANG  
HARDNESS (HRD) 61 (+/-)  
LOW PROFILE DIAL



## **NOVA 33T NO-LINE BLENDER**

MODEL: C4-6033

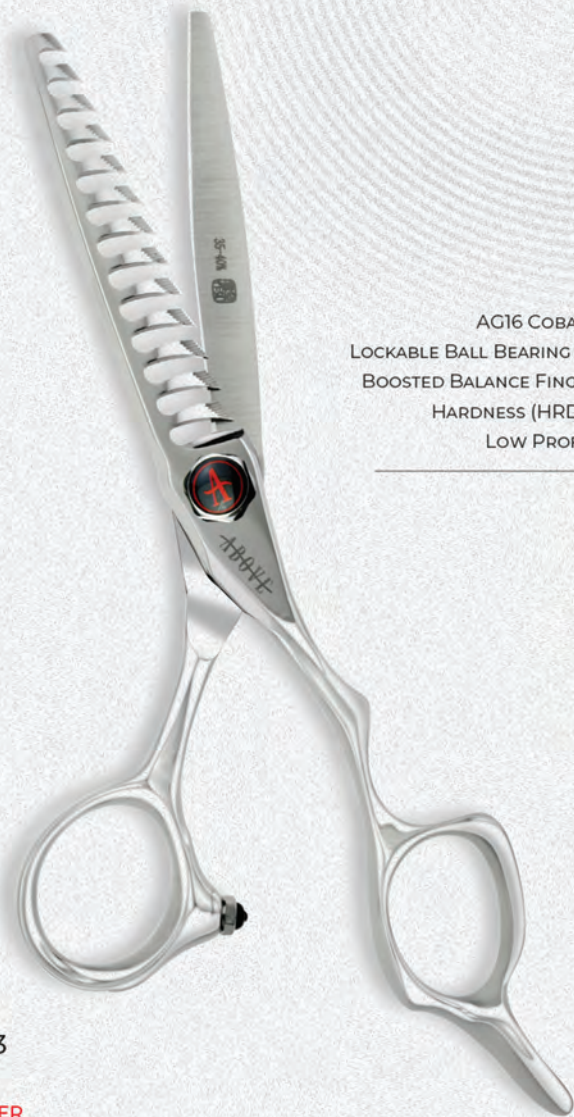
SIZES: 6.00

CATEGORY: TEXTURIZER

WEIGHT REMOVAL: 15-20%

WET & DRY MULTIPLE TECHNIQUES

[ABOVESHEARS.COM](http://ABOVESHEARS.COM)



AG16 COBALT STEEL  
LOCKABLE BALL BEARING TENSION  
BOOSTED BALANCE FINGER TANG  
HARDNESS (HRD) 61 (+/-)  
LOW PROFILE DIAL



## **NOVA 13T**

**MODEL: C4-6013**

**SIZES: 6.00**

**CATEGORY: TEXTURIZER**

**WEIGHT REMOVAL: 35-40%**

**WET & DRY MULTIPLE TECHNIQUES**





Ergo  
Nova  
Xfit

Flipper  
Finest

## Shear Series

DESIGNED BY ABOVE INTERNATIONAL INC. IN CALIFORNIA

## XFIT SERIES

Designed with an enhanced focus on ergonomics and precision cutting. These shears are engineered to deliver optimal hand comfort and unmatched cutting accuracy. The XFit Series is perfect for point and blunt cut techniques. The XFit Series takes ergonomics to a whole new level with its innovative handle design. Carefully crafted to fit the contours of the hand, these shears provide a much superior grip, reducing strain and fatigue during long hours of use.

Precision cutting is at the heart of the XFit Series. The blades are expertly crafted from high-quality Japanese steel, ensuring exceptional sharpness and durability. Whether you prefer point or blunt cut techniques, these shears deliver the utmost precision, effortlessly creating clean lines and flawless finishes.



AG16 PROPRIETARY STEEL | BALL BEARING TENSION | OFFSET HANDLES | HARDNESS (HRD) 61 (+/-)





The XFit Series excels in versatility and adaptability. With its finely tuned blade alignment, these shears offer exceptional control and maneuverability, enabling hairstylists to execute intricate cuts with ease. The sleek design further enhances the shears' aesthetic appeal, reflecting the professionalism and excellence associated with Above Shears.

Elevate your cutting game to new heights with the XFit Series by Above Shears. Experience the perfect blend of ergonomic design and precision cutting, allowing you to unleash your creativity and achieve outstanding results, whether it's point cutting or blunt cutting.

DESIGNED BY ABOVE INTERNATIONAL INC. IN CALIFORNIA

## XFit Series

DESIGNED BY ABOVE INTERNATIONAL INC. IN CALIFORNIA



AG16 COBALT STEEL  
BALL BEARING TENSION  
XFIT HANDLE  
HARDNESS (HRC) 61 (+/-)  
X WET BLADE



### **XFIT**

MODEL: C19-500X/550X/600X

SIZES: 5.0 / 5.5 / 6.0

CATEGORY: BLADE

WET & DRY CUT

ABOVESHEARS.COM



AG16 COBALT STEEL  
BALL BEARING TENSION  
XFIT HANDLE  
HARDNESS (HRC) 61 (+/-)  
TEXTURIZING TOOTH



## **XFIT NO-LINE BLENDER 27T**

MODEL: C19-5827

SIZES: 5.75 TEETH: 27

CATEGORY: TEXTURIZER

WEIGHT REMOVAL: 10-15%

WET & DRY CUT





Ergo  
Nova  
Xfit  
Flipper

---

Finest

Shear Series

DESIGNED BY ABOVE INTERNATIONAL INC. IN CALIFORNIA

## FLIPPER SERIES

Introducing the Flipper Series by Above Shears, an innovative series of professional cutting shears featuring flipper level ring handles for unparalleled precision and control. Crafted with special attention to detail, these shears redefine the cutting experience with their unique design. The Flipper Series showcases flipper level ring handles, meticulously engineered to provide a custom fit and ergonomic comfort. These handles allow for effortless flipping and rotation, ensuring precise and versatile styling options.

Designed for professional use, the Flipper Series combines cutting-edge materials with expert craftsmanship.



FLIPPER HANDLES



The flipper level ring handles of the Flipper Series enable stylists to achieve optimal control and accuracy, reducing strain and fatigue during long hours of use. The ergonomic design promotes a natural hand position, allowing for a comfortable and precise grip.

The Flipper Series represents a true fusion of innovation and functionality, delivering a cutting-edge solution for the modern hairstylist. Experience the next level of precision and versatility with the Flipper Series by Above Shears, and unlock your full creative potential.

DESIGNED BY ABOVE INTERNATIONAL INC. IN CALIFORNIA

# Flipper Series

DESIGNED BY ABOVE INTERNATIONAL INC. IN CALIFORNIA



AG16 COBALT STEEL  
BALL BEARING TENSION  
FLIPPER HANDLE  
HARDNESS (HRD) 61 (+/-)  
TEXTURIZING TOOTH



## FLIPPER 11T

MODEL: C15-6011

SIZES: 6.0 TEETH: 11

CATEGORY: TEXTURIZER

WEIGHT REMOVAL: 30-35%

WET & DRY CUT

ABOVESHEARS.COM





AG16 COBALT STEEL  
BALL BEARING TENSION  
FLIPPER HANDLE  
HARDNESS (HRD) 61 (+/-)  
DUAL TOOTH



## FLIPPER 2ITT NO LINE

MODEL: C16-6021DUAL

SIZES: 6.0 TEETH: 21

CATEGORY: TEXTURIZER

WEIGHT REMOVAL: 20-25%

WET & DRY CUT





Ergo  
Nova  
Xfit  
Flipper  
Finest

Shear Series

DESIGNED BY ABOVE INTERNATIONAL INC. IN CALIFORNIA

## ERGO FINEST

A remarkable shears collection designed with fine precision in mind. Engineered to deliver exceptional performance, Ergo Finest shears are crafted with the highest quality Japanese steel, boasting an impressive metal hardness rating of HRC 62.

The Above Ergo Finest Series showcases a mastery of precision and craftsmanship, as they combine superior quality shear blades with unrivaled sharpness and durability. With a hardness rating of HRC 62, these shears maintain their cutting edge for extended periods, maintaining precise and effortless cuts with every stroke.

Designed with ergonomics as a top priority, the Ergo Finest Series offers a comfortable and natural grip that minimizes hand and wrist fatigue. The offset handle design reduces strain, allowing hairstylists to maintain optimal control and accuracy during long hours of use.



AG16 PROPRIETARY STEEL | BALL BEARING TENSION | OFFSET HANDLES | HARDNESS (HRD) 62 (+/-)



Lightweight yet robust, the Ergo Finest Series promises efficiency and comfort for a seamless cutting experience. The sleek and modern design further exemplifies the level of professionalism and excellence set by Above Shears.

For stylists seeking the pinnacle of cutting precision and uncompromising quality, the Ergo Finest Series by Above Shears is the ultimate choice. Elevate your expertise with these remarkable shears to surpass all expectations and deliver unparalleled performance.

DESIGNED BY ABOVE INTERNATIONAL INC. IN CALIFORNIA

Ergo Finest

DESIGNED BY ABOVE INTERNATIONAL INC. IN CALIFORNIA



AG22 SUPER COBALT  
BALL BEARING TENSION  
ERGO FINEST HANDLE  
HARDNESS (HRC) 62 (+/-)  
UPGRADED WET&DRY BLADE



**ERGO FINEST**

MODEL: F10-600 / 700

SIZES: 6.0 / 7.0

CATEGORY: BLADE / FINEST

WET & DRY CUT



AG22 SUPER COBALT  
BALL BEARING TENSION  
ERGO FINEST SWIVEL HANDLE  
HARDNESS (HRC) 62 (+/-)  
UPGRADED WET&DRY BLADE



## ERGO S FINEST

MODEL: F10S-600

SIZES: 6.0

CATEGORY: SWIVEL / FINEST

WET & DRY CUT

Ergo Finest

DESIGNED BY ABOVE INTERNATIONAL INC. IN CALIFORNIA



AG22 SUPER COBALT  
BALL BEARING TENSION  
ERGO FINEST HANDLE  
HARDNESS (HRC) 62 (+/-)  
X WET BLADE



**ERGO X FINEST**

MODEL: F10-550X

SIZES: 5.5

CATEGORY: BLADE / FINEST

WET & DRY CUT

ABOVESHEARS.COM





AG22 SUPER COBALT  
BALL BEARING TENSION  
ERGO FINEST HANDLE  
HARDNESS (HRC) 62 (+/-)  
WIDE DUAL BLADE



## ERGO D FINEST

MODEL: F10-625D

SIZES: 6.25

CATEGORY: WIDE BLADE / FINEST

DRY & SLIDE CUT

Ergo Finest

DESIGNED BY ABOVE INTERNATIONAL INC. IN CALIFORNIA



AG22 SUPER COBALT  
BALL BEARING TENSION  
ERGO FINEST HANDLE  
HARDNESS (HRC) 62 (+/-)  
TEXTURIZING TOOTH



## ERGO FINEST 35T

MODEL: F10-6035

SIZES: 6.0

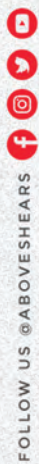
CATEGORY: TEXTURIZER / FINEST

WEIGHT REMOVAL: 10-15%

WET & DRY CUT

[ABOVESHEARS.COM](http://ABOVESHEARS.COM)





FOLLOW US @ABOVESHEARS  
DESIGNED BY ABOVE INTERNATIONAL INC. IN CALIFORNIA 2024